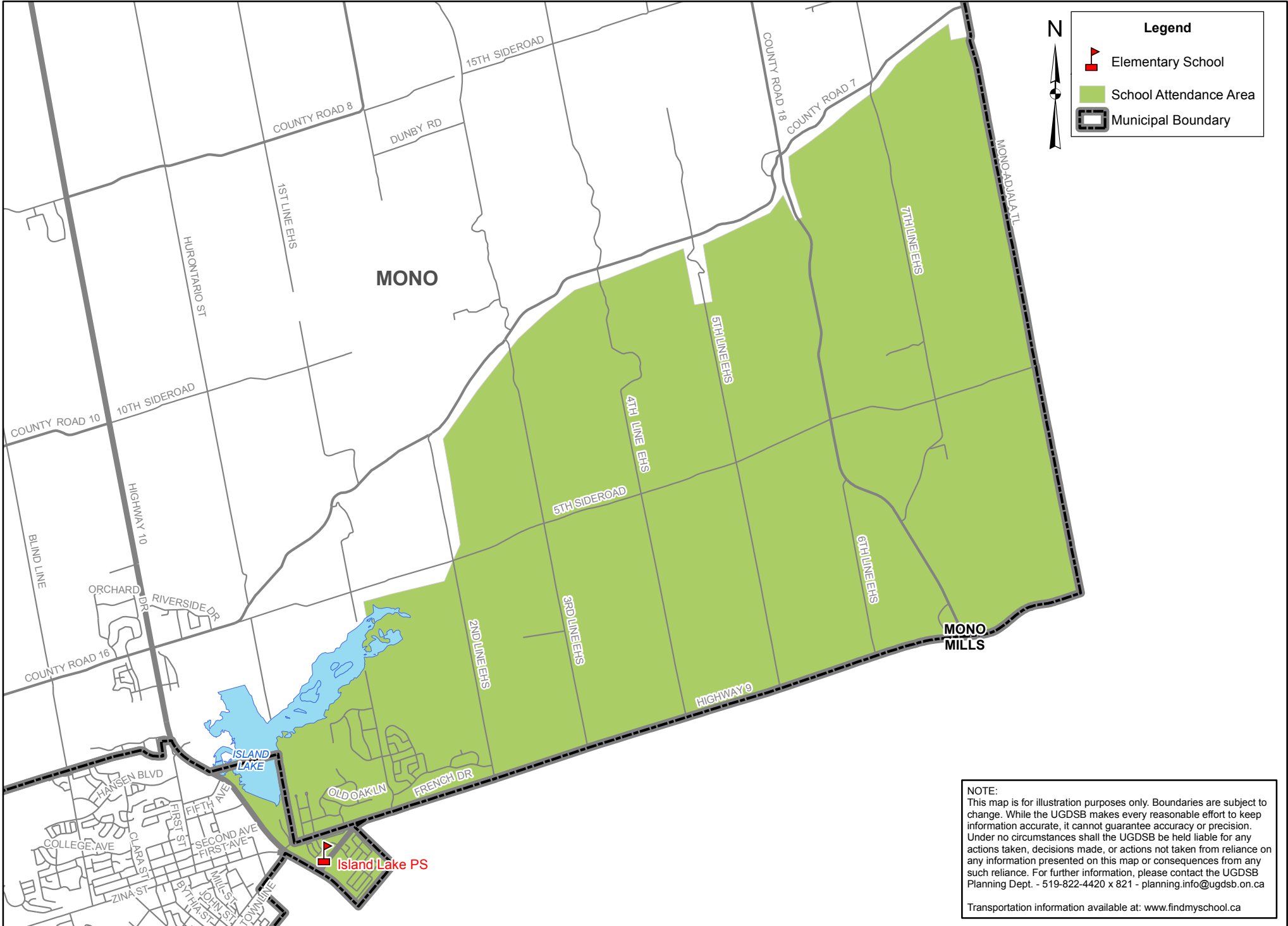


# Island Lake PS English JK to 8 Attendance Area



**NOTE:**  
 This map is for illustration purposes only. Boundaries are subject to change. While the UGDSB makes every reasonable effort to keep information accurate, it cannot guarantee accuracy or precision. Under no circumstances shall the UGDSB be held liable for any actions taken, decisions made, or actions not taken from reliance on any information presented on this map or consequences from any such reliance. For further information, please contact the UGDSB Planning Dept. - 519-822-4420 x 821 - [planning.info@ugdsb.on.ca](mailto:planning.info@ugdsb.on.ca)

Transportation information available at: [www.findmyschool.ca](http://www.findmyschool.ca)